



Construction

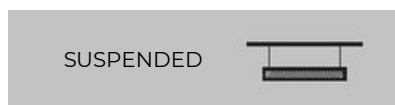
M-Line's sleek aluminium profile can be adapted to form many bespoke linear lengths and shaped designs. Corner sections are fully lit to enhance the visual impact that continuous lighting creates. Suspended and wall-mounted systems can be supplied to incorporate direct/indirect lighting options with dual switching available. The system can also be surface mounted or recessed in both ceilings and walls.

We are now sending out our M-Line products pre-flexed to make installation easy for you!

Typical Application

General Office Areas, Conference Rooms, Reception Areas, Educational Facilities, Hotels and Leisure Facilities, Residential Properties, Retail, Bars and Restaurants.

- // Aluminium extruded sections in 9 standard lengths and can be increased by 140mm increments
- // Bespoke shaped formations available subject to design
- // Colour options in 3000K/4000K/5000K
- // Incorporates European branded LED drivers
- // Direct/Indirect lighting options available for suspended and wall mounted
- // Utilises latest generation long-life LEDs from leading manufacturers
- // Clip-in gear tray for easy installation
- // Screwless end caps available on request
- // Blanking plates/sections available via design service
- // Opal polycarbonate diffuser
- // Tuneable white and RGB options available
- // Dimmable and emergency options available
- // Compatible with Casambi wireless control system
- // Dual Switch option available
- // Also available in recessed trimless system
- // CRI>80
- // 5-year warranty





Product Configuration

Choose your options to generate the full order code

Section	Option Code	Description
1 - EMERGENCY	/M	Leave blank if no emergency Emergency
	/MZ	DALI Emergency
	/ND	Non Dim
	/DA	DALI Dim
2 - CONTROL	/BTC	Casambi Dim
	/9016	RAL9016 White
3 - FINISH	/9005	RAL9005 Black
	/RA	Any RAL Colour
	/	See next page for new finishes
	/4K	4000K
4 - CCT	/3K	3000K (light output -6%)
	/5K	5000K
	/TW	Tunable White
	/RGB	Colour Changing LED
5 - CRI	/80	CRI>80 (typical 84)
	/90	CRI>90

FULL CODE EXAMPLE:

MLE1424/MZ/DA/9005/4K/80 = M-Line Suspended Linear Light, 1424mm, DALI Dim, Black RAL9005, 4000K, CRI>80



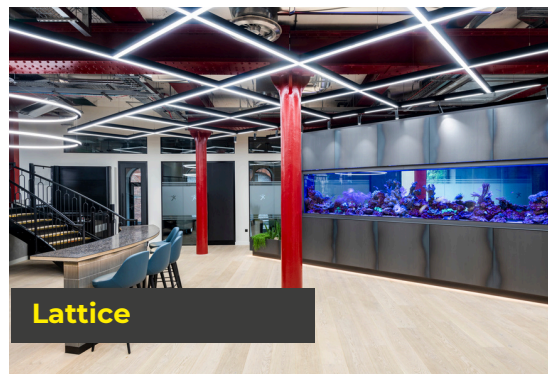
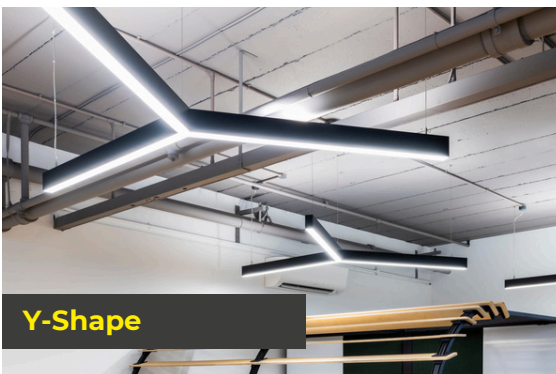
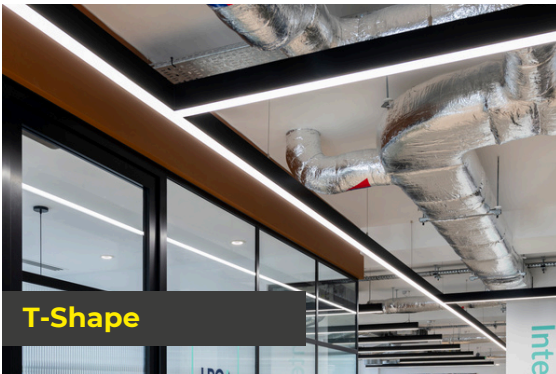
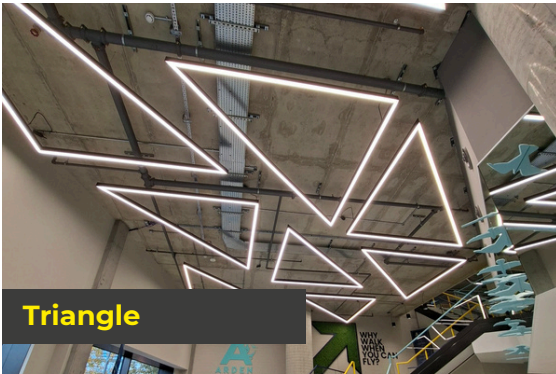
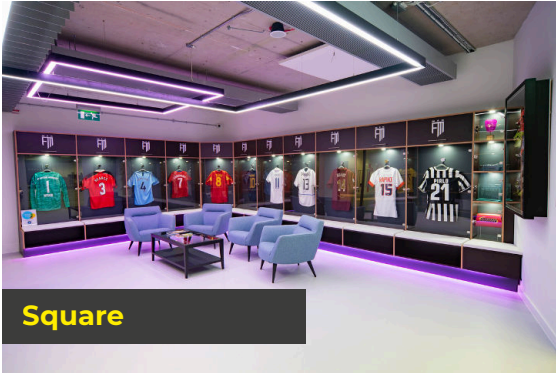
Suspension Accessories

Option Code	Description
Supply Cable	
CR375C/3M	3 core 0.75mm clear flex cable - 3m lead
CR475C/3M	4 core 0.75mm clear flex cable - 3m lead
CR575C/3M	5 core 0.75mm clear flex cable - 3m lead
NOTE: Alternative length suspension kits available - POA	

LED Technical Parameters	
Operating Life - L70/B50 at 50°C	102,000 hrs
LED Binning	SDCM <3

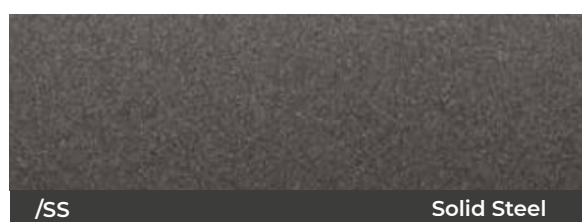
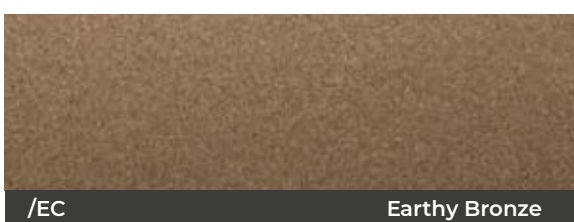
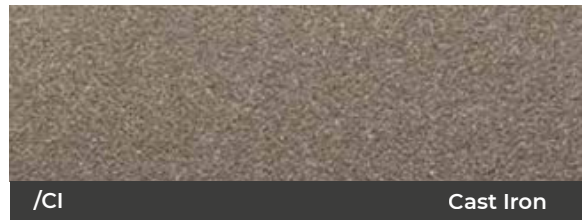
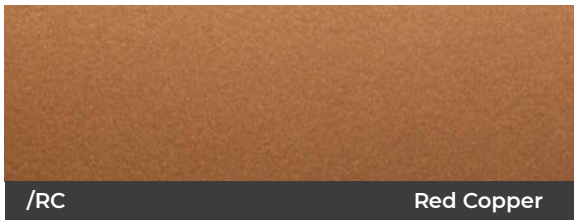


Bespoke shapes shown through our projects!

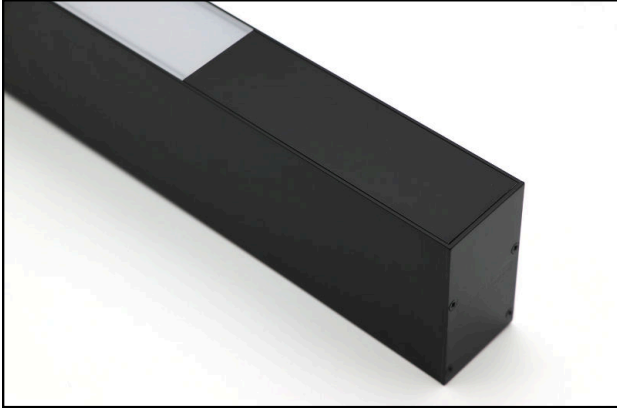


NEW FINISHES!

Powder Coating



Available Custom Features



Blanking Sections

Blanking sections available through design service



Pre-flexed cable (suspended only)

Make installation easier



Presence Detection - Blank sections

Presence detectors can be flush mounted into the blanking section



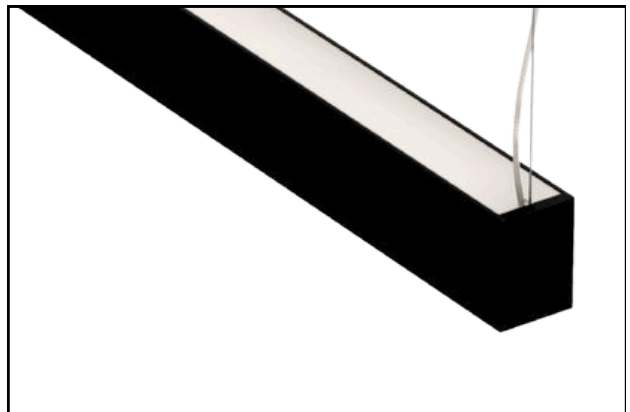
Track Spot - Blank sections

Track spots can be mounted in a blank section of the M-Line



Quick Release Clamps

The quick-release clamp provides a tool-free secure installation method.



Uplight (suspended & wall mounted only)

For illuminating exposed and high ceilings for ambient layers of light.