



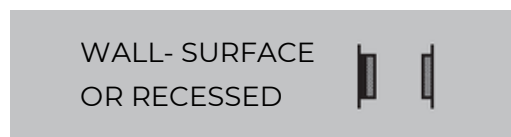
Construction

M-Line's sleek aluminium profile can be adapted to form many bespoke linear lengths. Corner sections are fully lit to enhance the visual impact that continuous lighting creates. Suspended and wall-mounted systems can be supplied to incorporate direct/indirect lighting options with dual switching available. The system can also be surface mounted or recessed in both ceilings and walls. **We are now sending out our M-Line products pre-flexed to make installation easy for you!**

- // Aluminium extruded sections in 9 standard lengths and can be increased by 140mm increments
- // Bespoke shaped formations subject to design
- // Aluminium blanking plates available
- // Colour options in 3000K/4000K/5000K
- // Incorporates European branded LED drivers
- // Direct/Indirect lighting options available for suspended and wall mounted
- // Utilises latest generation long-life LEDs from leading manufacturers
- // Clip-in gear tray for easy installation
- // Opal polycarbonate diffuser
- // Tuneable white and RGB options available
- // Dimmable and emergency options available
- // Compatible with Casambi wireless control system
- // Dual Switch option available

Typical Applications

General Office Areas, Conference Rooms, Reception Areas, Educational Facilities, Retail Units, Bars, Restaurants, Hotels and Leisure Facilities and Residential Properties.



M-LINE CONTINUOUS SYSTEM



Suspended Direct/Indirect Systems



Surface Mounted Systems



Recessed Trimless System



Recessed System

Product Configuration

Choose your options to generate the full order code

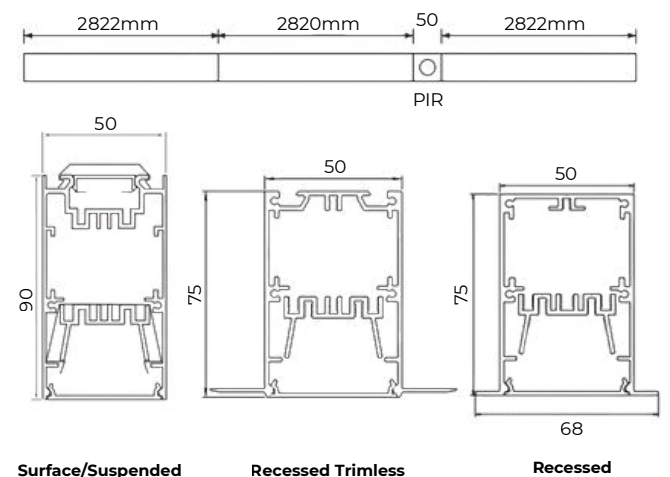
Section	Option Code	Description
1 - EMERGENCY	/M	Leave blank if no emergency
	/MZ	Emergency
	/ND	DALI Emergency
2 - CONTROL	/DA	Non Dim
	/BTC	DALI Dim
	/BTR	Casambi Dim
3 - FINISH (only for surface or suspended options)	/9016	RAL9016 White
	/9005	RAL9005 Black
	/RA	Any RAL Colour
	/	See next page for new finishes
	/4K	4000K
4 - CCT	/3K	3000K (light output -6%)
	/5K	5000K
	/TW	Tunable White
	/RGB	Colour Changing RGB
5 - CRI	/80	CRI>80 (typical 84)
	/90	CRI>90

LED Technical Parameters	
Operating Life - L70/B50 at 50°C	102,000 hrs
LED Binning	SDCM <3

Suspension Options

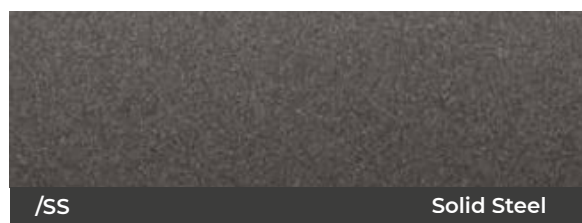
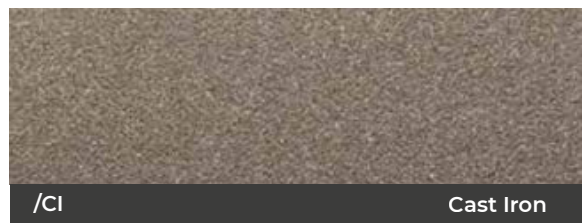
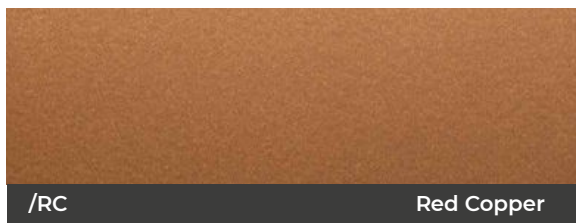
Option Code	Description
Supply Cable	
CR375C/3M	3 core 0.75mm clear flex cable - 3m lead
CR475C/3M	4 core 0.75mm clear flex cable - 3m lead
CR575C/3M	5 core 0.75mm clear flex cable -3m lead
NOTE: Alternative length suspension kits available - POA	

Typical Section Build Up Options



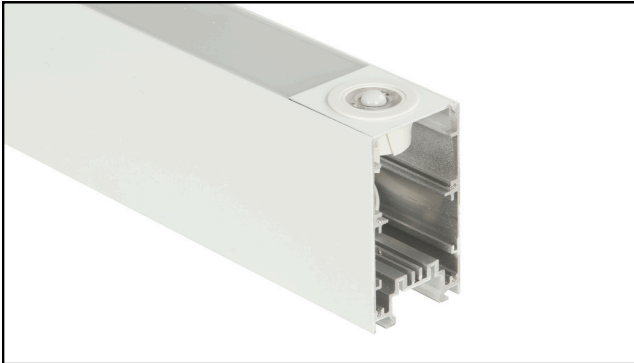
NEW FINISHES!

Powder Coating



M-LINE CONTINUOUS SYSTEM

M-LINE®



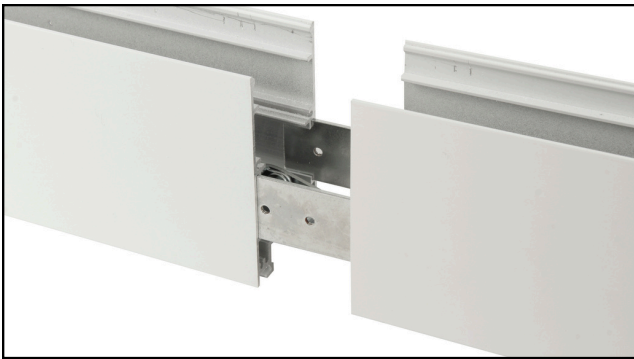
Presence Detector

Presence detectors are typically flush mounted in a 50mm wide aluminium plate.



Light Spill Plate

The innovative light spill plate has been designed to clip in where sections join to hide any unsightly light bleed.



Joining System

Dual joining plates are mounted within the profile, that slide into grooves in either section to ensure a rigid fit.



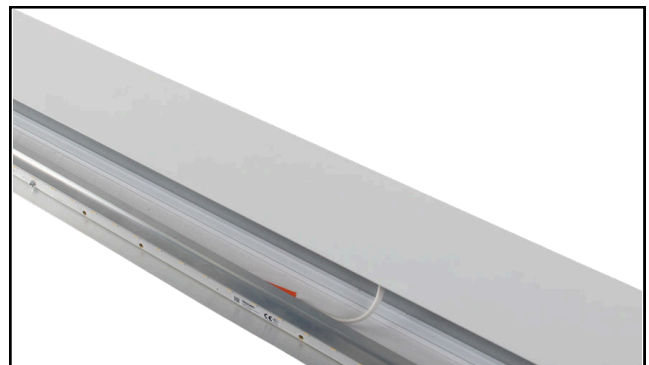
Suspension Set

Snap-on suspension clip allows easy location at any point along back of luminaire. Alternative lengths available.



Quick Release Clamps

The quick-release clamp provides a tool-free secure installation method.



Clip-in Gear Tray

Gear Tray is secured using pre-installed clips, which allows for a tool-free installation.